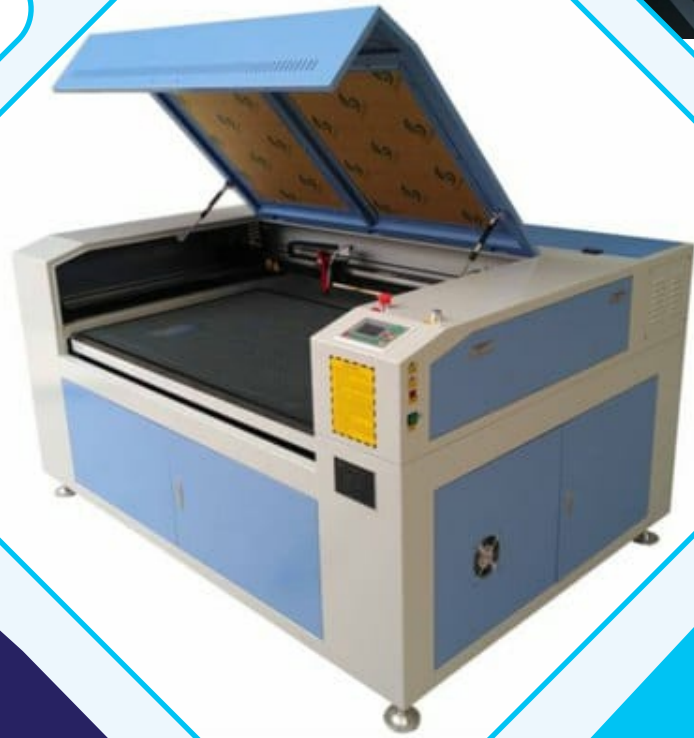




V.V. ELECTROMATIONS



Laser, Plotter, Printer, CNC, Marking

Deals in :

Sticker Cutting Machine | Fiber Laser Marking Machine
Co2 Laser Machine | CNC Router Machine
Eco Solvent Machine | 5 in 1 Mug Machine
3D Sublimations Machine | Spare Parts,
Mdf, Ink **Sales & Service....**

OFFICE :

V.V. ELECTROMATIONS

FF - 28 Pujar Complex, Ellora Park Subhanpura, Vadodara - 390023

PH No : +91 83206 42019 | +91 99799 39010

GSTIN : 24CXKPM5401N1Z8

www.vvelectromations.com | vvelectromations@gmail.com





About V.V. Electromations

The V.V. ELECTROMATIONS in Vadodara Gujarat have Products like laser engraving systems, laser cutting systems, laser marking systems, cutters/plotters, Woodworking CNC routers, Printers, Large Format Solvent Inkjet Printers, Laser Fiber marking Machine ,Ink, and mdf ... etc

V.V. ELECTROMATIONS are a fast growing concern in the printing and laser industry. We have emerged as a prominent and promising manufacturer, exporter and supplier of Laser Cutting, Laser Marking, Laser Engraver, CNC Router, Laser Welder, Cutting Plotter, Flatbed Cutting Plotter, Solvent Printer,

Since the past years, we have been engaged in catering to the diverse needs of various industries through our high quality products. Our machines are highly demanded by various reputed firms and industries. Our range of offered machinery is known for its efficiency, ease of operation and durability. Easy to install and maintain, these machines guarantee excellent performance with negligible needs for maintenance. Our commitment to achieve client satisfaction has helped us stay ahead of other competitor firms.

OFFICE :

V.V. ELECTROMATIONS

FF - 28 Pujar Complex, Ellora Park Subhanpura, Vadodara - 390023

PH No : +91 83206 42019 | +91 99799 39010

GSTIN : 24CXKPM5401N1Z8

www.vvelectromations.com | vvelectromations@gmail.com





V.V. ELECTROMATIONS

OUR PRODUCT



JK 721
Cutting Plotter



5 in 1 Heat
Press Machine



Graphtech
Cutting Plotter



3D Sublimations
Machine



CO2 Laser
Cutting & Engraving
Machine

Ink

OFFICE :

V.V. ELECTROMATIONS

FF - 28 Pujar Complex, Ellora Park Subhanpura, Vadodara - 390023

PH No : +91 83206 42019 | +91 99799 39010

GSTIN : 24CXKPM5401N1Z8

www.vvelectromations.com | vvelectromations@gmail.com





V.V. ELECTROMATIONS

WOOD CNC ROUTER MACHINE



EQUIPMENT FEATURES :

1. Welded structure by thick profiled steel, stabilized under high temperature, ensures minimum distortion, excellent rigidity and powerful strength.
2. Y-Axis with double motor driving ensures stable and smooth movement of the machine.
3. High precision rack gear transmission ensures fast speed and high accuracy.
4. Optimized mechanical and electrical design with well-selected brand parts minimizes Breakdown rate.
5. Spindle with high power enables powerful cutting strength.
6. Function of continuous working at stop point by power failure.
7. Vacuum adsorption device is optional.



OFFICE :

V.V. ELECTROMATIONS

FF - 28 Pujar Complex, Ellora Park Subhanpura, Vadodara - 390023

PH No : +91 83206 42019 | +91 99799 39010

GSTIN : 24CXKPM5401N1Z8

www.vvelectromations.com | vvelectromations@gmail.com





TECHNICAL PARAMETERS

MODAL	VV-1325/3015
Working Area (X*Y*Z)	1300mm* 2500mm
Working Table	Aluminum Profile Working Table with T-Slot PVC Plate
Spindle	3.5 KW air-Cooling Spindle
Control System	DSP Rich Auto A II
Resolution	+_0.05 mm
Spindle Speed	18000-24000 rpm
Working Voltage	AC220v/50hz
Engraving Speed	12000mm/min
Feeding Height	150mm
Tool Diameter	3.175 mm, 6.0 mm, 12.7 mm
Working Dictate	HPGL, G Code

APPLICABLE INDUSTRIES & MATERIALS :

1. Woodworking wooden door and furniture, windows, tables and chairs, cabinets and panels, 3D wave plate, MDF. Computer Desk, Musical instruments etc.
2. Die industry, Copper Sculpture, Aluminum engraver, Metal Molds, Plastic Sheeting PVC etc.
3. Decoration : Acrylic, Density Board, Articiul Stone, Organic Glass, Soft Metals like Aluminum.





V.V. ELECTROMATIONS

FIBER LASER CUTTING MACHINE



EQUIPMENT FEATURES :

1. High strength machine tool has relieved the internal stress through aging annealing treatment to ensure a long term stability and accuracy.
2. Double Drive design, high precision, high precision rack gear and rail.
3. Movable handle control with convenient for collecting the material.
4. Dedicated software enables graphic or test to instantly designed or processed.
5. Receiving system is convenient for collecting the material.
6. No gas is needed. auxiliary gas could be blow for cutting the metal plates.



OFFICE :

V.V. ELECTROMATIONS

FF - 28 Pujar Complex, Ellora Park Subhanpura, Vadodara - 390023

PH No : +91 83206 42019 | +91 99799 39010

GSTIN : 24CXKPM5401N1Z8

www.vvelectromations.com | vvelectromations@gmail.com



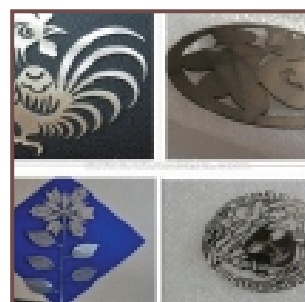
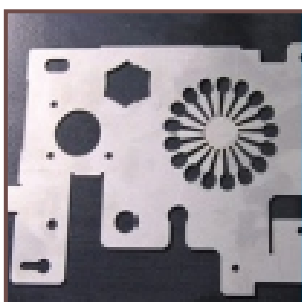
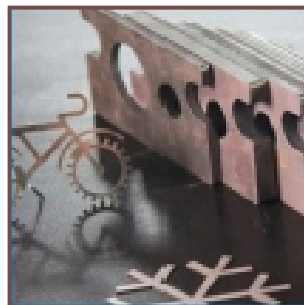


TECHNICAL PARAMETERS

MODAL	VV-1530
Working Area	1500*3000MM
Laser Type	Fiber
Laser Power	500W / 750W / 1000W / 1500W
Weight	3500 KG
Controller	CYP Cut
Maximum Cutting Speed	0-30 m/mm (Depending on the material and thickness)
Maximum Traveling Speed	80 m/min
Repositioning Position	+/- 0.03 mm
Driver Motor	Yesakawa Servo Motor & drive (Japanese Brand)
Equipment Power Consumption	<10 kw
Power Supply	380 V/ 50 Hz / 40 Hz / 60 A 3 Phase

APPLICABLE :

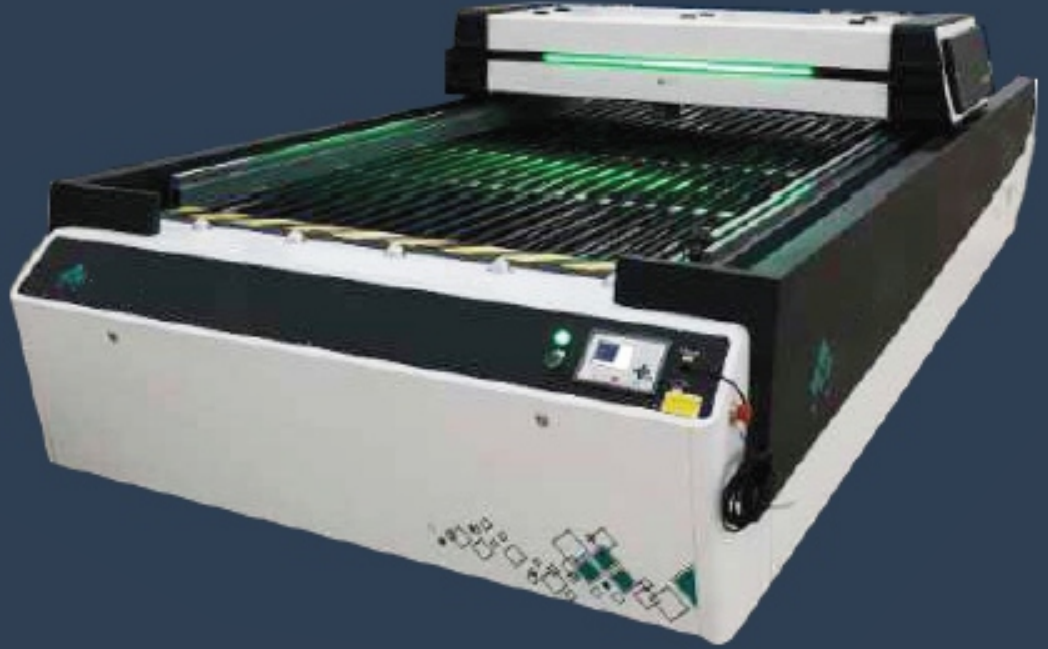
APPLICABLE FOR HIGH SPEED CUTTING ON VARIOUS METAL PLATES AS S/S, CARBON STEEL, GALVANIZED SHEET, ELECTROLYTIC PLATE, ALUMINUM PLATE, STEEL, BRASS, ALLOY, RARE METALS AND OTHER MATERIALS.



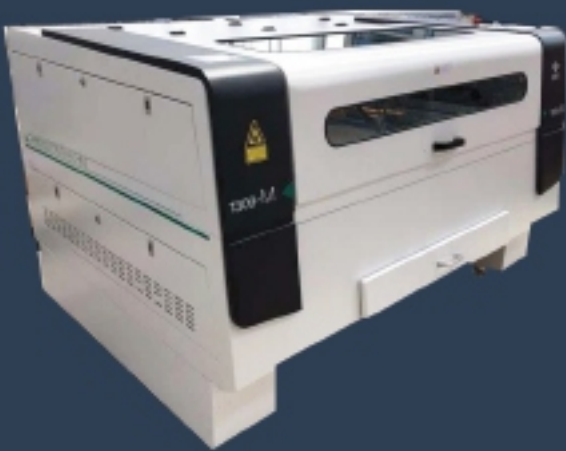


V.V. ELECTROMATIONS

LASER ENGRAVING CUTTING MACHINE



	ENGRAVE	CUT		ENGRAVE	CUT
Wood	★	★	Leather	★	★
Acrylic	★	★	Marble	★	
Glass	★		Paper	★	★
Ceramics Tile	★		Pointed Metals	★	
Cloth	★	★			



OFFICE :

V.V. ELECTROMATIONS

FF - 28 Pujar Complex, Ellora Park Subhanpura, Vadodara - 390023

PH No : +91 83206 42019 | +91 99799 39010

GSTIN : 24CXKPM5401N1Z8

www.vvelectromations.com | vvelectromations@gmail.com





TECHNICAL PARAMETERS

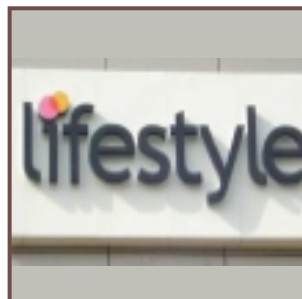
MODAL	VV 6040	VV 6090	VV1390	VV 1325
Laser Power	60W	80W	100W	130W
Laser Type	Co2 Glass Laser Type			
Engraving Speed	0-24000 (MM/MIN)			
Power Supply	AC220V + 10%, 50HZ			
Location Precision	<0.01MM			
Minimum Later Size	\x\MM			
Gross Power	<1250 W			
Operation Humidity	0-45 Dig.			
Graphic Format supported	BMP, ZIP, JPEG, PCX, TGA, TIFE, PLT, CDR, DMG/DDF			
Cooling System	Water Cooling			
Other Auxiliary Equipment	Exhaust - Fans and Air-Exhaust Pipe			

FEATURES :

1. Strengthened welded lathe ensure long term accuracy and stability or performance.
2. X, Y axis adept round rall and bolt transmittion on for large format fast engraving.
3. Full equaloped with smoke exhausting and anti-polution system for better environment.
4. Separate control box, cloctric parts probtection and extended service the.

APPLICABLE :

Model Industry (Construction Models, Awiation and navigation models and wooden toys)
advertising Decoration Arts and Crafts, Electronics and Electric Appliances, Garment, Leather, Cloths etc.
Non-Metal Materials such as Rubber, Plastic, Cloth, Leather, Woolens, Organic Glass, Tiles, MDF, Paper, Marbles





V.V. ELECTROMOTIONS

LASER & CNC MACHINE SPARE PARTS



OFFICE :

V.V. ELECTROMOTIONS

FF - 28 Pujar Complex, Ellora Park Subhanpura, Vadodara - 390023

PH No : +91 83206 42019 | +91 99799 39010

GSTIN : 24CXKPM5401N1Z8

www.vvelectromotions.com | vvelectromotions@gmail.com





FIBER LASER MARKING MACHINE



MODAL	Fiber Laser Marking Machine
Laser Wavelength	1064nm
Laser Power	20W-30W-50W
Marking Area	110mm x 110mm
Laser Device	Raycus
Min. Line Width	0.01mm (0.0004")
Galvanometer	Qinlong(China brand)
Control Card	JCZ(Original)
M2/Beam quality M2	<1.2
Min. Letter	0.2mm (0.008")
Power supply	220V / 50Hz / 1kVA
Service	Indian Local service support
Lens	Bochang (China)
Red light	Double red light
Marking line speed	(Adjustable depending on material)
Cooling Method	Air cooling
Warranty	One year

FEATURES :

1.Fiber laser: high- speed scanning galvo mirror; English operation system.

APPLICABLE :

1. Widely used in electronic part and component, electrical engineering, electrical appliance, telecommunication product, car and motorcar spare part, instrument and meters, plastic case, aviation and aerospace, military product, facility, measuring implement, cutting tool, sanitary appliance, stationery, medicament, food and beverage, make-up, medicine packaging, medical instrument, clock and jewelry, light-through key board, solar PV, and craft, etc.
2. Widely suitable for various metals, alloy, metallic oxide materials and some non-metallic materials (silicon wafer, ceramics, plastic, rubber, epoxy resin, ABS, printing ink, plating, spraying, and coating film, etc.)

SAMPLE PICTURES





XP600 ECO SOLVENT 1601



Model	1601-XP600	
Print head	Using Epson Print head, including 180 nozzles/row*6*lines*1, high quality up to 1440dpi	
Print resolution/speed	4pass:14m ² /hour	
	6pass:9.5m ² /hour	
	8pass:7m ² /hour	
Ink	Sort	ECO-DYE-UV-RZR Water Based Ink/ Eco Solvent Ink, Water Based ink; dye ink, Sublimation ink
	Capacity	4 Colors:1.5L*4/color;
Media	Maximum Width	1600mm
	Thickness	1.5mm to 8mm adjustable
	Max Roll Weight	75KG
	Sort	PP Synthetic paper, vinyl sheet, film, coated paper, Acid Proof paper banner, canvas etc., Adhesive Vinly sheet, Banner and so on.
High Printing quality	Three intelligent eclosion print function;VSD technology	
Media Heater	Pre/Post Heater (Can be controlled separately)	
Media Take-up Device	Strong Rolling take-up device with the automatic damper	
Drying system	Drying system(option)	
Interface	Network port	
RIP Software	Maintop V5.3 5.5, Photoprint, Topaz, Seeget Wasatch	
Power	AC110V+/- 10%、AC220V+/-10%、50/60+HZ	
Operation Environments	20 C-35 C, 35%RH-65%RH	
	Temperature:20 C-35 C, Humidity:35%RH-65%RH	
Machine size	L 2600 x W 700 x H 1500mm	
Height of Worktable	1050mm	

Functions :
Advanced software functions of the wide format inkjet printing machine.

(1) High-efficient Printing

1. Rip while printing
2. Print selected area
3. Skip white in X and Y printing directions.
4. Auto media sensor for setting print origin automatically (3 Picture positions : left, middle & right).

(2) Printing Quality Enhanced

1. Two feather printing modes; moist, gradient.
2. Simple printhead calibration mode can be easily mastered by operators.
3. Micro adjustment of print head voltage.

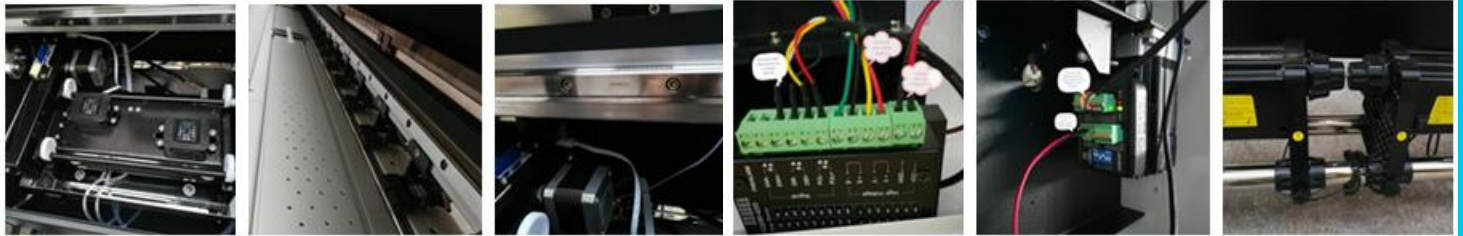
(3) Human-based functions

1. Two feather printing modes; moist, gradient.
2. Simple printhead calibration mode can be easily mastered by operators.
3. Micro adjustment of print head voltage.

(4) Ink saving function

1. Options for single head cleansing or double heads cleansing.
2. Options for light, medium and heavy print head sucking.

Details:



OFFICE :

V.V. ELECTROMATIONS

FF - 28 Pujar Complex, Ellora Park Subhanpura, Vadodara - 390023

PH No : +91 83206 42019 | +91 99799 39010

GSTIN : 24CXKPM5401N1Z8

www.vvelectromations.com | vvelectromations@gmail.com



VV ELECTROMOTIONS

GRAPHTEC

Cutting Plotter CE7000 series

CE7000-40 / CE7000-60 / CE7000-130 / CE7000-160 (Not available in US & Korea)

NEW



Enhanced basic specification and excellent cost-effectiveness

- Supporting a cutting force of 4.41N (450gf) expands application possibilities.
- Ease of use with great media tracking on long runs.
- ARMS8.0 helps improve the productivity of print and cut.
- Improved workflow with offline output using USB memory and data management function using Barcode.
- Useful standard or optional software helps improve the efficiency of cutting operation.

* The basket in photo above is optional item.

www.graphteccorp.com

GRAPHTEC CUTTING PLOTTER CE7000 series

Graphtec cutting plotters never stop evolving.

The cutting plotter CE7000 series has great efficiency as high as high-end model with high cost-effectiveness. Support improve work efficiency and productivity with enhanced specifications and standard software specialized for cutting operation.



4 sizes are available depending on the application.

Minimum mountable media width is 50mm (1.96 inch). Maximum mountable media width depends on each machine: 484mm (19 inch), 712mm (28 inch), 1372mm (54 inch) and 1626mm (64 inch).

Model	Media
CE7000-360	50mm - 484mm
CE7000-130	50mm - 712mm
CE7000-60	50mm - 1372mm
CE7000-40	50mm - 1626mm

Supports various cutting patterns such as perforation cut with maximum cutting speed 1000mm/s (*1).



Cutting performance that guarantees accurate 5m length cutting. (*2)

The media stacker helps stabilize the feeding of media. By adjusting the pressure of the middle push roller to the media (*1) in three levels, it prevent media floating. In addition, by using an optional special basket, stability in long cuts can be achieved.



Push roller pressure switching (CE7000-40/60/130/160) Media stacker (CE7000-40/60/130/160) Optional basket (CE7000-40/60/130/160)

Data output via USB flash memory without PC The cutting data designed with Cutting Master 4 or Graphtec Pro Studio / Plus can be output directly to the cutting plotter by saving to USB flash memory and plugging in. This simplified work-flow enables users to operate without a computer.



ARMS 8.0

The Advanced Registration Mark Sensing system delivers precise Print & Cut results by using sensors to detect registration mark. Continuous efficiency boosting features improve productivity for Print & Cut applications such as stickers and decals. For more information and performance test results, please visit our website.

Data Link Function (Barcode Data Management/Continuous Cutting)

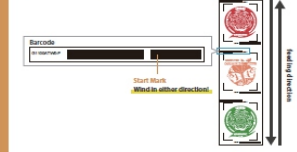
By reading the Graphtec original Barcode, CE7000 automatically detects its linked data from PC or USB flash memory. This function is available regardless of which printer or RIP software is used.

*The USB memory format only supports FAT32. Please note that NTFS and exFAT are not supported.



Continuous Cut (Data Link function)

Barcode data management allows cutting different data sequentially by detecting the "Start Mark" of the new Barcode. Sequential Print & Cut process with roll-media is now available.



Software

Software	Standard/Optional
Adobe Illustrator / CorelDRAW plug-in software	Standard/Optional
Cutting Master 4	Standard/Optional
Graphtec design software	Standard/Optional
Graphtec Pro Studio / Graphtec Studio	Standard/Optional
Advanced Graphtec Design Software	Optional
Graphtec Pro Studio Plus	Optional

Graphtec Studio Plus is the enhanced edition of Graphtec Pro Studio. It is optional software with functions for improving productivity and advanced design. Additional functions include transformation of characters and graphics, automatic sequence number insertion, bar code creation, templates for dimensions creation, nesting, directional change of cutting lines, changing cutting order, and more.

Graphtec Pro Studio Plus features:

- Text and shape deformation, character reshape effect, Spelling check
- Color fill, Fill the drawing area, Layer Nest Shifting
- Serialized numbering, Barcode, QR code, etc. Cutting simulation
- Changing cutting order, Drill to top or side, Nest nesting the 90-degree design region
- Other features of Graphtec Pro Studio Plus for Stencils
- 3D rendering design support
- Other features of Graphtec Pro Studio Plus for Auto Nesting
- Nesting Axis, Power Tool, Holdback

and perform auto alignment operation on "ARMS", please visit our website.

Supports colored marks / specialty media

A wide variety of media types including holographic paper and reflective sheets are now compatible due to improvements of the ARMS sensor algorithm.

Ex:

* Sensor may not be able to read certain combinations of specialty media and colored marks.

Supports Adobe Illustrator "Crop Marks"

Using the plug-in software Cutting Master 4, Adobe Illustrator crop marks will be available.

Expanded Cutting Area

The expanded cutting area to include objects outside of the area enclosed by registration marks. Production efficiency is enhanced by reducing media waste.

① CE7000-130, CE7000-160
② Strong control about is necessary.
③ In case that using optional basket of CE7000-40/60/130/160 and cutting media and conditions specified for our customer.
④ For more information about compatibility of the latest OS on application software, please check the Graphtec website or contact your local representative of Graphtec.
⑤ CTR is supported with Windows only.
⑥ Supported file: CorelDraw Pro Studio only.

Specifications				
Item	CE7000-40	CE7000-60	CE7000-130	CE7000-160 (Not available in US & Korea)
Configuration	Grit rolling type			
Drive method	Digital servo drive			
Max. cutting area (W x L) (*1)	375mm x 50mm	603mm x 50mm	1270mm x 50mm	1524mm x 50mm
Cutting area of guaranteed accuracy (*1) (When using optional basket)	355mm x 2m	583mm x 2m (583mm x 5m)	1250mm x 2m (1250mm x 5m)	1504mm x 2m (1504mm x 5m)
Mountable media width	Min.	50mm		
	Max.	484mm (19inch)	712mm (28inch)	1372mm (54inch)
Mountable roll media mass	5kg	9kg	17kg	20kg
Number of push rollers	2 rollers		4 rollers (Max. 5 (option))	
Max. cutting speed	600mm/s at all direction		900mm/s at 45° direction	
Acceleration	Max. 21.2m/s ² at 45° direction		Max. 13.9m/s ² at 45° direction	
Cutting force	Max. 4.41N (450gf)			
Minimum character size	Approx. 5 mm alphanumeric (varies depending on character font and media)			
Mechanical resolution	0.005mm			
Programmable resolution	GP-GL : 0.1/0.05/0.025/0.01mm HP-GL™ (*2) : 0.025mm			
Repeatability (*1)	Max. 0.1 mm in plot up to 2 m (Excluding media expansion and contraction)			
Mountable number of tools	1 tool			
Blade types	Supersteel			
Pen types	Oil-based ballpoint pen, Water-based fiber-tip pen			
Media types	Up to 0.25mm thickness Marking film (PVC / fluorescence / reflection), polyester film (With specified conditions)			
Interface	USB 2.0(Full Speed), Ethernet 10BASE-T/100BASE-TX			
Buffer memory	2MB			
Command sets	GP-GL / HP-GL™ (Set by command or auto-detect) (*2)			
Display	Graphic type LCD with back-light (240dots x 128dots), supports 10 languages			
Power source	100V to 120V AC, 200V to 240V AC, 50 / 60 Hz			
Power consumption	Up to 100W			
Operating environment	10 to 35 °C, 35 to 75 % R.H. (non-condensing)			
Guaranteed accuracy environment	16 to 32 °C, 35 to 70 % R.H. (non-condensing)			
External dimensions (W x D x H) (with basket)	Approx. 772 x 292 x 313 mm	Approx. 1005 x 582 x 1092 mm (1005 x 936 x 1092 mm)(*3)	Approx. 1704 x 811 x 1215 mm (1704 x 1148 x 1215 mm)(*3)	Approx. 1916 x 811 x 1215 mm (1916 x 1148 x 1215 mm)(*3)
Weight (approx.) (with basket)	13 kg	23 kg (25.2 kg)(*3)	51 kg (54.9 kg)(*3)	55 kg (59.5 kg)(*3)
Compatible OS (*4)	Windows 10/8.1/7 Mac OS X 10.6 ~ 10.11 / macOS 10.12 ~ 10.15 (Graphtec Studio: 10.6 - 10.15, Cutting Master 4: 10.7 - 10.15)			
Supported software (*5)	Graphtec Pro Studio(Windows)(*6), Graphtec Studio(Mac), Cutting Master 4(*6), Windows Driver			
Safety	PSE, UL/cUL, CE mark			
EMC	VCCI Class A, FCC Class A, CE mark			

Option		
Item	Part No.	Description
Basket for CE7000 series	PG0103	For CE7000-60
	PG0104	For CE7000-130
	PG0105	For CE7000-160
Carrier sheet table	OPH-A45	For CE7000-40 or CE7000-60
Additional push roller kit	OPH-A49	Only for CE7000-130/CE7000-160
Optional Stand	ST0118	For CE7000-60
Graphtec Pro Studio Plus	OPS682-PLS	Design software including all advanced functions (1 license)
Graphtec Pro Studio Plus for Rhinestone	OPS682-RSF	Limited edition of rhinestone function only (1 license)
Graphtec Pro Studio Plus for Auto Nesting	OPS682-ANF	Limited edition of auto nesting function only (1 license)

Standard accessories		
Item	Qty	Description
Power cord	1	The type of cord is different by destination.
USB Cable	1	2.9m long
Cutting blade holder	1	PHP33-CB09N-HS
Cutting Blade	1	CB09UB-1P
Loupe	1	PM-CT-001
Fiber-tip pen holder	1	PHP31-FIBER
Water-based Fiber-tip pen	1	KF700-BK (black)
Roll Media Tray	1	Only for CE7000-40
Stand for CE7000	1	Standard accessory for 130 / 160
DVD-ROM	1	User manual, Windows driver, Graphtec Pro Studio (Windows, 1 license), Graphtec Studio (Mac), Cutting Master4
Printed document	1	Setup Manual, Cutter Blade Manual and Safety Manual

Supplies			
Item	Part No.	Description	Package
Cutting blade holder	PHP33-CB09N-HS	For CB09U series blade	1 set/pack
	PHP33-CB15N-HS	For CB15U series blade	1 set/pack
Cutting blade	CB09-P	0.9mm dia. 45° angle, Supersteel	5 blades/pack
	CB09UB-5	0.9mm dia. 45° angle, Supersteel	5 blades/pack
	CB09UB-K60-5	0.9mm dia. 60° angle, for Car-film	5 blades/pack
	CB15U-5	1.5mm dia. 45° angle, for paper/cardboard	5 blades/pack
	CB15U-K30-5	1.5mm dia. 30° angle, for paper/cardboard	5 blades/pack
Loupe	PM-CT-001	Checking blade length, for PHP33 and PHP35 series	1 set/pack
Fiber-tip pen holder	PHP31-FIBER	Pen holder for KF700 series pen	1 set/pack
Water-based fiber-tip pen	KF700-BK	Pen (black)	10 pens/pack
Ballpoint pen holder	KF700-RD	Pen (red)	10 pens/pack
Oil-based ballpoint pen	PHP34-BALL	Pen holder for KB700 pen	1 set/pack
Carrier Sheet	KB700-BK	Pen (black)	10 pens/pack
Cutting mat	CR09300-A3	A3 size	2 sheets/pack
	PM-CR-009	For CE7000-40 replacement cutting mat	2 sets/pack
	PM-CR-010	For CE7000-60 replacement cutting mat	2 sets/pack
	PM-CR-011	For CE7000-130 replacement cutting mat	2 sets/pack
	PM-CR-012	For CE7000-160 replacement cutting mat	2 sets/pack

- * CE7000-160 is not available in US & Korea.
- *1 Operated with Graphtec specified cutting condition and media. For long-length cutting, the basket is used.
- *2 HP-GL™ is a registered trademark of Hewlett-Packard Company.
- *3 When equipped with the stand.
- *4 Graphtec does not support software/driver used with operating systems that have become obsolete and are no longer supported by the OS developer.
- *5 The software can be used by downloading from Graphtec website.
- *6 It requires an Internet connection in order for activation or registration when starting the software for the first time.

V.V ELECTROMATIONS

FF - 28 Pujar Complex, Ellora Park Subhanpura, Vadodara - 390023

PH No : +91 83206 42019 | +91 99799 39010

GSTIN : 24CXKPM5401N1Z8

www.vvelectromations.com | vvelectromations@gmail.com



V.V. ELECTROMATIONS

WOOD MATERIAL



LED KEYCHINE AND PEN & METAL KEYCHINE



V.V. ELECTROMATIONS

FF - 28 Pujar Complex, Ellora Park Subhanpura, Vadodara - 390023

PH No : +91 83206 42019 | +91 99799 39010

GSTIN : 24CXKPM5401N1Z8

www.vvelectromations.com | vvelectromations@gmail.com



Deals in :

Sticker Cutting Machine | Fiber Laser Marking Machine

Co2 Laser Machine | CNC Router Machine

Eco Solvent Machine | 5 in 1 Mug Machine

3D Sublimations Machine | Spare Parts,

Mdf, Ink **Sales & Service....**

V.V. ELECTROMATIONS

FF - 28 Pujar Complex, Ellora Park Subhanpura,
Vadodara - 390023

PH No : +91 83206 42019 | +91 99799 39010

GSTIN : 24CXKPM5401N1Z8

www.vvelectromations.com

vvelectromations@gmail.com

